



KESSEBÖHMER
CLEVER STORAGE



LINERO MosaiQ

VERSATILE, INFINITELY VARIABLE,
EYE-CATCHING DESIGN.



LINERO MosaiQ

LINEAR ORGANISATION, MODULAR VERSATILITY

 KESSEBÖHMER

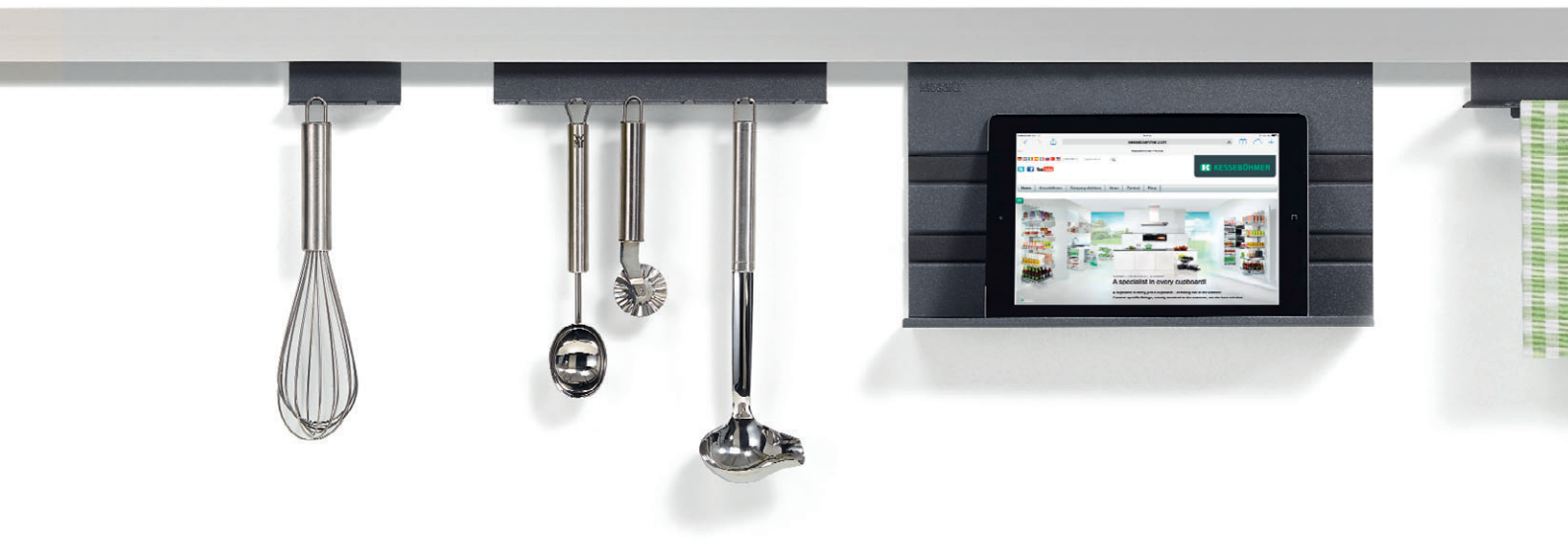


ROUTINE TASKS BECOME A REAL PLEASURE ONCE YOUR KITCHEN (OR BATHROOM) IS ORGANISED THE WAY YOU LIKE IT. EFFICIENCY MEANS HAVING THE THINGS YOU NEED OFTEN READY TO HAND. LINERO MosaiQ KEEPS THINGS WHERE THEY MAKE SENSE FOR YOUR WORKSTYLE.

The basic element for this splashback system is an aluminium rail attached to the wall. The storage elements are sim-

ply attached above or below the rail, exactly where you want them. With the integrated lighting strip, all the elements are softly illuminated. Swapping elements around couldn't be easier. The espresso cups, a pot of basil (or aftershave and a toothbrush) can be stored exactly where you need them – and where they look best. Prop up a tablet computer or anything else you like to keep handy. LINERO MosaiQ – special places for everyday things.

[kesseboehmer.com/linero-mosaiq](https://www.kesseboehmer.com/linero-mosaiq) 



VERSATILE
AND VARIABLE
LINERO MosaiQ
ENDLESS VARIATIONS

— KESSEBÖHMER —



THE MULTI-FUNCTIONAL, ANODISED ALUMINIUM RAIL CAN BE EITHER SCREWED OR GLUED TO THE WALL, MAKING IT IDEAL FOR GLASS SPLASHBACKS TOO.

The MosaiQ modules are hung on below or inserted above. The shelf elements come in a choice of three heights with their design accentuated by horizontal décor strips. The colour choices of the matt, tactile coating (graphite black and titanium grey) were chosen in consultation with a well-known design institute; shelf inserts are offered in wood or glass.

Functional elements include hooks and single and double roll holders. There is also an ergonomically designed knife block and containers with angled bases to hold a pot of herbs or kitchen implements. LINERO MosaiQ has been launched with eleven core applications for unlimited mixing and matching. The system helps users make the most of the splashback space in kitchens and bathrooms.

Under-mounted LINERO MosaiQ elements and LINERO 2000 elements are, of course, compatible.

[kesseboehmer.com/linero-mosaiq](https://www.kesseboehmer.com/linero-mosaiq) 



Graphite black with oak shelf insert



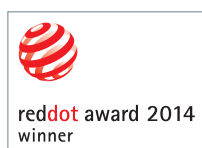
Titanium grey with oak shelf insert



Titanium grey with smoked glass shelf insert



Graphite black with smoked glass shelf insert



Universal shelf DIN A4
Perfect access via generous cut-out

Aluminium rail set

LINERO MosaiQ

	Dimensions (mm)	Art. no.
1 aluminium rail	BxDxH	
2 end caps	600 x 32,9 x 41,5	00 8900
1 connector	900 x 32,9 x 41,5	00 8901
Connectors to screw onto wall	1200 x 32,9 x 41,5	00 8902
	1500 x 32,9 x 41,5	00 8903

Colour number:
Stainless steel finish 9845

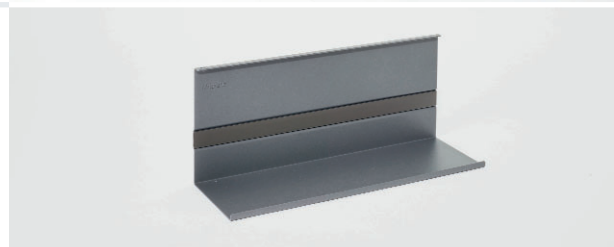


Universal shelf 140

LINERO MosaiQ

Colour number:	BxDxH	Art. no.
Titanium grey 9843	350 x 110 x 140	00 8912
Graphite black 9844	Storage area: 350 x 107	

Colour number:
Titanium grey 9843
Graphite black 9844



Universal shelf 200

LINERO MosaiQ

Colour number:	BxDxH	Art. no.
Titanium grey 9843	350 x 110 x 200	00 8913
Graphite black 9844	Storage area: 350 x 107	

Colour number:
Titanium grey 9843
Graphite black 9844



Universal shelf 300

LINERO MosaiQ

Colour number:	BxDxH	Art. no.
Titanium grey 9843	350 x 110 x 300	00 8914
Graphite black 9844	Storage area: 350 x 107	

Colour number:
Titanium grey 9843
Graphite black 9844

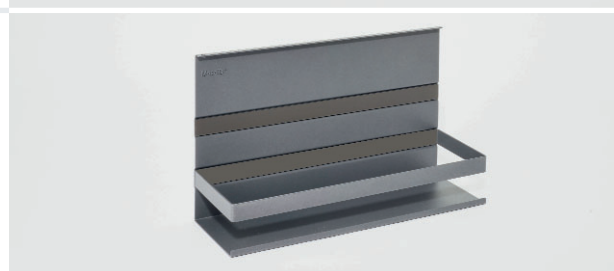


Universal shelf 200 with rail

LINERO MosaiQ

Colour number:	BxDxH	Art. no.
Titanium grey 9843	350 x 110 x 200	00 8918
Graphite black 9844	Storage area: 350 x 107	

Colour number:
Titanium grey 9843
Graphite black 9844

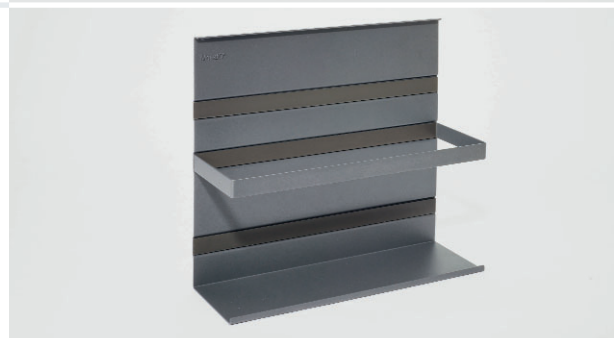


Universal shelf 300 with rail

LINERO MosaiQ

Colour number:	BxDxH	Art. no.
Titanium grey 9843	350 x 110 x 300	00 8919
Graphite black 9844	Storage area: 350 x 107	

Colour number:
Titanium grey 9843
Graphite black 9844



Universal shelf DIN A4

LINERO MosaiQ

Colour number:	BxDxH	Art. no.
Titanium grey 9843	335 x 250 x 140	00 8953
Graphite black 9844	Storage area: 332 x 247	

Colour number:
Titanium grey 9843
Graphite black 9844





Art. no. Dimensions (mm)

00 8927 BxDxH
350 x 110 x 300

Storage area:
350 x 107

Memo board 300

LINERO MosaiQ

Magnetic blackboard

(glass surface with shelf, holds magnets,
wipe-clean)

Colour number:

Titanium grey 9843

Graphite black 9844



00 8908 BxDxH
350 x 155 x 120

Paper roll holder

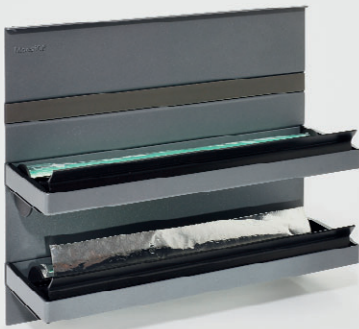
LINERO MosaiQ

for kitchen paper rolls up to 295 mm wide

Colour number:

Titanium grey 9843

Graphite black 9844



00 8909 BxDxH
350 x 110 x 300

ROLLINERO foil roll holder

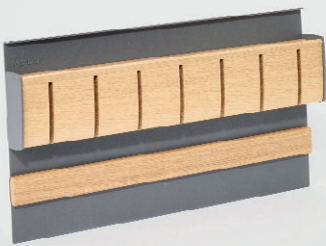
LINERO MosaiQ

for clingfilm and foil rolls up to 330 mm wide

Colour number:

Titanium grey 9843

Graphite black 9844



00 8905 BxDxH
350 x 45 x 200

Magnetic knife block

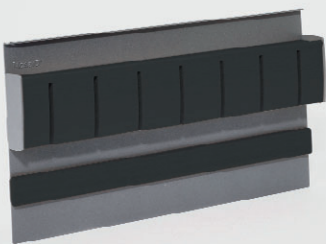
LINERO MosaiQ

Finish: Oak

Colour number:

Titanium grey 9843

Graphite black 9844



00 8906 BxDxH
350 x 45 x 200

Magnetic knife block

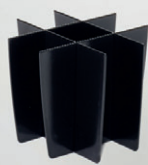
LINERO MosaiQ

Finish: Plastic, black/grey

Colour number:

Titanium grey 9843

Graphite black 9844



00 8910 BxDxH
135 x 135 x 156

Container/herb pot

LINERO MosaiQ

incl. removable dividers

Material: Plastic, UV-resistant, food safe
and dishwasher safe

Colour number: 9003



00 8911 BxDxH
116 x 115 x 56

Shallow dish

LINERO MosaiQ

Material: Plastic, UV-resistant, food safe
and dishwasher safe

Colour number: 9003

	Dimensions (mm)	Art. no.	
Top-mounted towel rail LINERO MosaiQ insert from above Colour number: Titanium grey 9843 Graphite black 9844	BxDxH 350 x 77 x 10	00 8920	
Towel rail LINERO MosaiQ insert from below Colour number: Titanium grey 9843 Graphite black 9844	BxDxH 350 x 77 x 46	00 8921	
Double hook LINERO MosaiQ Colour number: Titanium grey 9843 Graphite black 9844	BxDxH 85 x 44 x 38	00 8922	
Hook strip LINERO MosaiQ Colour number: Titanium grey 9843 Graphite black 9844	BxDxH 250 x 44 x 38	00 8923	
Top-mounted shelf 235 LINERO MosaiQ insert from above Colour number: Titanium grey 9843 Graphite black 9844	BxDxH 235 x 107 x 8	00 8924	
Top-mounted shelf 350 LINERO MosaiQ insert from above Colour number: Titanium grey 9843 Graphite black 9844	BxDxH 350 x 107 x 8	00 8925	
Top-mounted shelf 585 LINERO MosaiQ insert from above Colour number: Titanium grey 9843 Graphite black 9844	BxDxH 585 x 107 x 8	00 8926	
Shelf insert, oak LINERO MosaiQ Available in a choice of widths to fit shelf elements Colour number: 0358	BxDxH 235 x 106,5 x 4 350 x 106,5 x 4 585 x 106,5 x 4	00 8928 00 8929 00 8930	
Shelf insert, smoked glass LINERO MosaiQ Available in a choice of widths to fit shelf elements Colour number: 0000	BxDxH 235 x 106,5 x 4 350 x 106,5 x 4 585 x 106,5 x 4	00 8931 00 8932 00 8933	

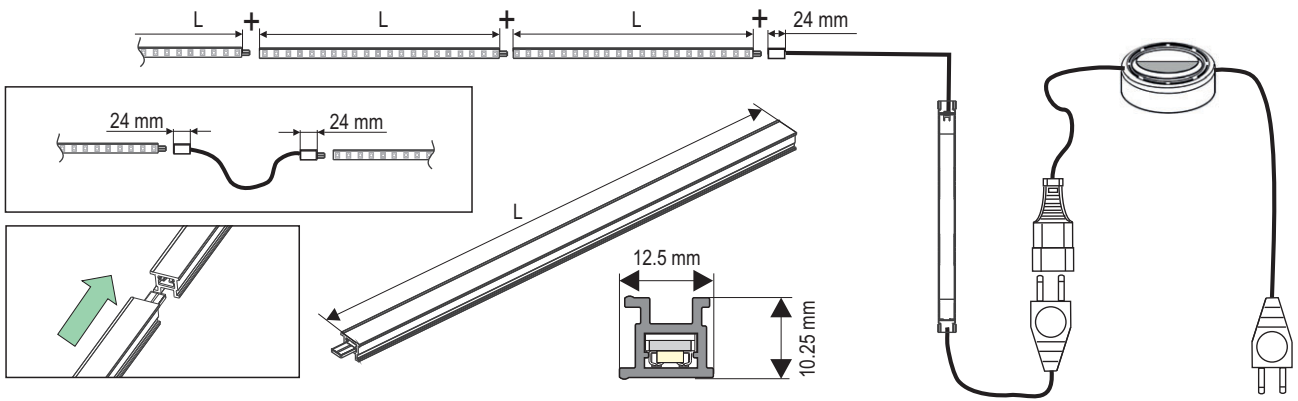


LED LIGHTS

CAST A GLOW OVER LINERO MosaiQ ELEMENTS!

— KESSEBÖHMER —

Overall dimensions LED lighting



LED stick

LINERO MosaiQ

Colour temperature: 4000 Kelvin
(neutral white) incl. diffuser

1.68 Watt
2.24 Watt
3.36 Watt

Dimensions (mm)

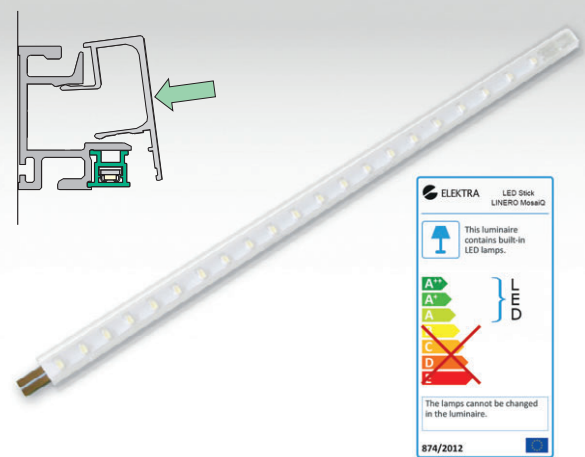
BxDxH

290 x 12.5 x 10.25
383 x 12.5 x 10.25
568 x 12.5 x 10.25

Art. no.

00 8935
00 8936
00 8937

Easy installation: sticks can be seamlessly joined to create any length of lighting system



LED power supply

LINERO MosaiQ

max. 20 Watt

primary: 100-240 Volt, 50/60 Hz

secondary: 24 Volt

incl. 3,000 mm mains cable and
1,800 mm LED connecting cable

without switch

(20 Watt is adequate for a LED strip with a maximum length of 3,450 mm.
The LED driver cannot be integrated in the rail.)

BxDxH

280 x 20.5 x 15.5

EU plug

GB/UK plug

US/JP plug

AUS plug

00 8939

00 8942

00 8944

00 8945



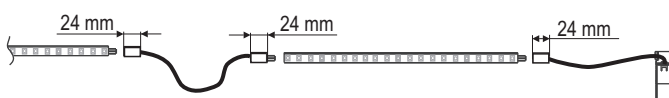
LED connector

LINERO MosaiQ

(stick to stick)

Optional component to connect two LED sticks flexibly, eg, around a corner

Colour number: 9003



Length

2,000 mm

00 8941



Switch

LINERO MosaiQ

for 20 Watt LED power supply, 230 V/2,5 A

one end:

flat 2-pin Europlug on 2,000 mm cable

one end:

flat Euro connector on 2,000 mm cable

Colour number: 9003

66 Ø

00 8943





FEATURES & BENEFITS:

- Extra sockets: "you can never have too many sockets in your kitchen"
- Flexibility: the eBoxx can be positioned anywhere along the rail
- Retrofittable: saves the effort of laying cables under plaster
- A lot of technology integrated in one box: LED driver, sockets and cables neatly integrated in the rail and eBoxx
- Convenient sockets to charge tablets, smartphones, etc. The metal shelf provides secure storage.

eBoxx FOR LINERO MosaiQ

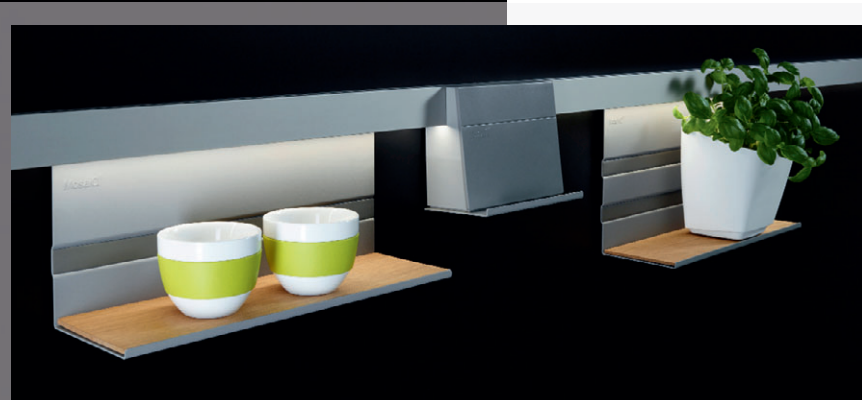
ONE BOX – MULTIPLE FUNCTIONS

 KESSEBÖHMER

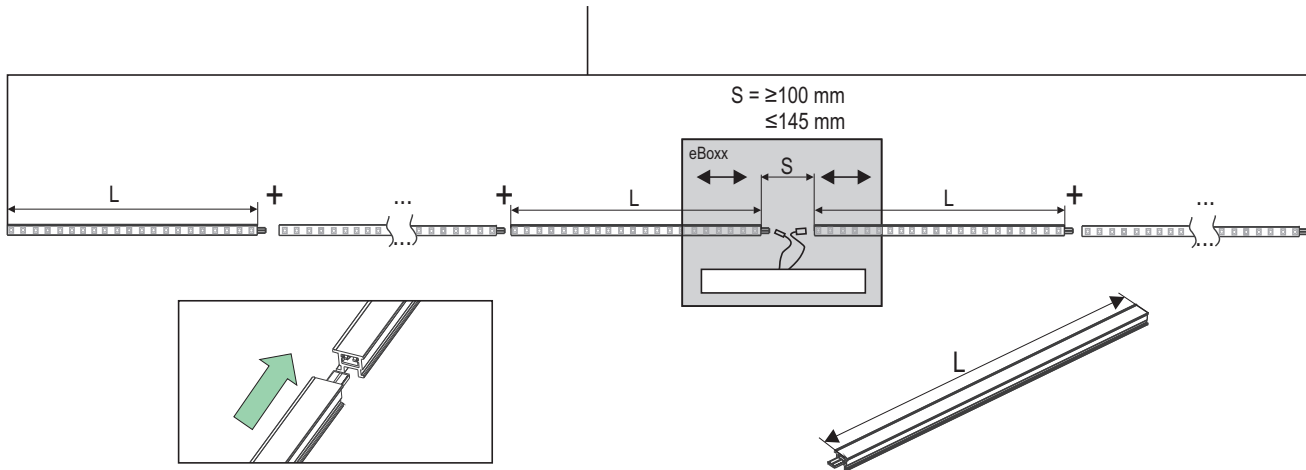
TODAY'S KITCHENS HAVE TO MEET A LOT OF EXPECTATIONS. Quite apart from their central function – cooking – intelligent and up-to-date energy and socket management is more and more important. It's the only way to cope with the escalating number of electrical appliances. In addition, digital media are moving into the kitchen in a big way. More and more people look up recipes on their tablets or smartphones.

The eBoxx is a practical response to all these demands. It provides extra sockets – that are easy to reach – and a secure place to stand a tablet or smartphone. It also locates and conceals LED splashback lighting components that are necessary, but not decorative. The LED driver, switch and cable are easily stowed out of sight in the eBoxx and the LINERO MosaiQ rail.

[kesseboehmer.com/linero-mosaiq](https://www.kesseboehmer.com/linero-mosaiq) 



Overall dimensions LED lighting with eBoxx = L + ... + L + S + L + ...



Art. no. Dimensions (mm)

BxDxH
165 x 92 x 139

eBoxx set LED

LINERO MosaiQ

for LED lighting for LINERO MosaiQ +

1 x socket

Country:
00 8934 DE
00 8955 IT
00 8957 FR/BE/PL/CZ
00 8959 GB
00 8961 AUS
00 8963 USA

Consists of:

1x socket, earthed

1x switch for integrated LED driver

1x LED driver max. 30 Watt; 100-230 Volt,
50/60Hz, secondary 24 Volt

1x power-in cable, twin + earth, 2 metres
1x secondary line with LED connector

(30 Watt is adequate for our LED lighting
with a maximum length of 5,100 mm)

WARNING: Open cable end of the power
supply cable must be installed by a qualified
electrician. Observe DIN VDE 0100.

Colour numbers, metal shelf:

Titanium grey 9843
Graphite black 9844

Plastic housing:

Titanium grey



Art. no. Dimensions (mm)

LxDxH

00 8935 290 x 12.5 x 10.25

00 8936 383 x 12.5 x 10.25

00 8937 568 x 12.5 x 10.25

LED stick

LINERO MosaiQ

Colour temperature: 4000 Kelvin

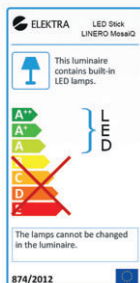
(neutral white) incl. diffuser

1.68 Watt

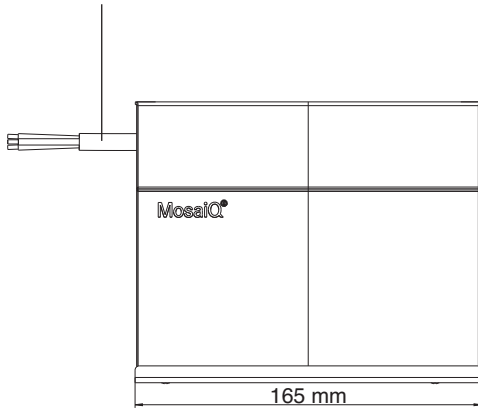
2.24 Watt

3.36 Watt

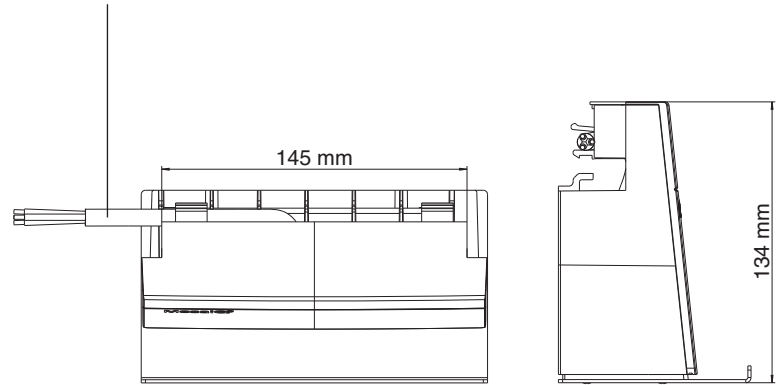
Easy assembly – link LED sticks using
integrated plug&socket system to create
variable LED length



Power-in cable, twin + earth, 2 metres



Power-in cable, twin + earth, 2 metres



eBoxx set sockets
LINERO MosaiQ
with integrated 2x socket

Consists of:
2x socket, earthed
1 x power-in cable, twin + earth, 2 metres

(WARNING: Open cable end of the power supply cable must be installed by a qualified electrician. Observe DIN VDE 0100.)

Colour numbers, metal shelf:
Titanium grey 9843
Graphite black 9844

Plastic housing:
Titanium grey

Dimensions (mm)

BxDxH
165 x 92 x 139

Country:

DE
IT
FR/BE/PL/CZ
GB

AUS
USA

Art. no.

00 8954
00 8956
00 8958
00 8960
00 8962
00 8964





FEATURES & BENEFITS:

- PowerMaxx for no-drill fixing – especially on glass splashbacks
- Simple, errorproof installation
- Ideal for retrofitting
- Removable without trace
- A product MADE IN GERMANY

NO-DRILL FIXING

IDEAL FOR LINERO MosaiQ



The product	Tube contents	Atomiser contents
Product type	Glue	Activator and cleaning agent
Components	2-component	
Volume	One set is enough to glue on 1,500 mm profile	
Load capacity	15 kg per metre	
Application temperature (short – up to 1 hour)	-40°C to 100°C (120°C)	

PowerMaxx IS THE IDEAL SOLUTION FOR ATTACHING THE LINERO MosaiQ PROFILE TO ANY SMOOTH INTERIOR SURFACE. The substrate must be smooth and even and capable of bearing the load. It could be tiles, glass, wood, laminates, metals and many plastics. PowerMaxx can be removed from almost any substrate without leaving any residues.

Gluing instead of drilling makes installation far easier, but the connection is just as strong.

kesseboehmer.com/linero-mosaiq 



00 8904
23 4040

PU
1 set
10 sets

PowerMaxx set
(for 1,500 mm profile length)

- 1x consumer package with euro slot hanger
- 4x positioning aids
- 1x 6 gram tube of adhesive
- 1x atomiser (cleaning agent/activator)
- 1x toothed spatula

Sets in consumer box

Art. no.
00 8948

MAXI starter set

Contents:

- 2 x rail incl. fixings ❶
- 2 x double hook ❷
- 1 x universal shelf 300 ❸
- 1 x paper roll holder for kitchen towels ❹
- 1 x container incl. removable dividers ❺

Colour number: Titanium grey 9843 · Graphite black 9844

MIDI starter set

00 8947

Contents:

- 1 x rail incl. fixings ❶
- 1 x double hook ❷
- 1 x universal shelf 300 ❸
- 1 x container incl. removable dividers ❺

Colour number: Titanium grey 9843 · Graphite black 9844

MINI starter set

00 8946

Contents:

- 1 x rail incl. fixings ❶
- 1 x double hook ❷
- 1 x paper roll holder for kitchen towels ❹

Colour number: Titanium grey 9843 · Graphite black 9844

Add-on set magnetic knife holder

00 8950

Contents:

- 1 x rail incl. fixings ❶
- 1 x magnetic knife block ❻

Colour number: Titanium grey 9843 · Graphite black 9844

Add-on set foil dispenser

00 8949

Contents:

- 1 x rail incl. fixings ❶
- 1 x foil dispenser ❼

Colour number: Titanium grey 9843 · Graphite black 9844

Add-on set memoboard

00 8951

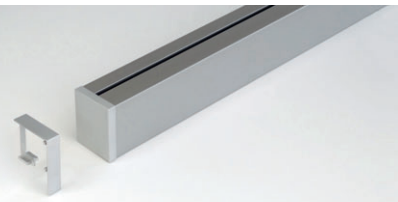
Contents:

- 1 x rail incl. fixings ❶
- 1 x memoboard ❽
- 1 x dish ❸

Colour number: Titanium grey 9843 · Graphite black 9844



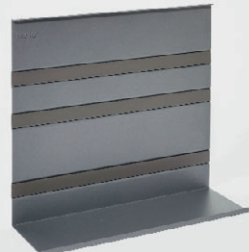
❶



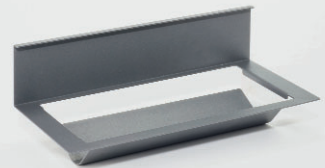
❷



❸



❹



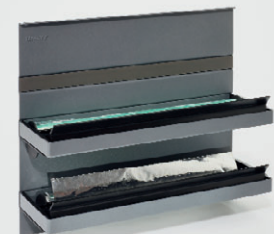
❺



❻



❼



❽





LINERO MosaiQ SHELF SET

DESIGN AND CREATE OPEN-PLAN SPACES

 KESSEBÖHMER

FEATURES & BENEFITS:

- Carries on the popular look&style of the LINERO MosaiQ midway system
- Simple, errorproof assembly and installation
- Individual choice of back panel decor
- Set pack: shelf angles top and bottom. Customers add their choice of back panel
- Ideal for kitchens and living areas

WITH THE LINERO MosaiQ SHELF SET YOU CAN PUT A SHELF EXACTLY WHERE YOU NEED IT.

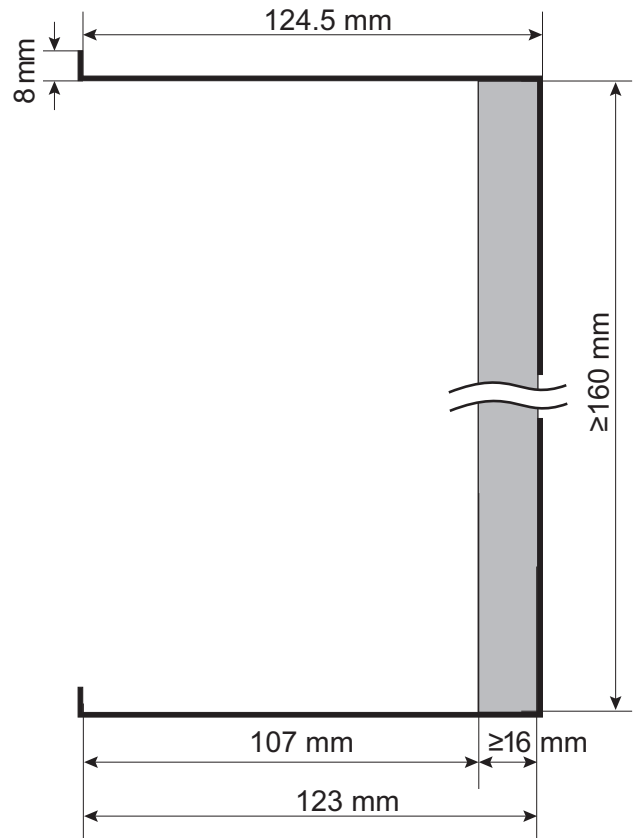
This is a stand-alone organizer element, optically related to the MosaiQ system, that can be put up anywhere. You choose the height (min. 160 mm) and the design of the 16°mm thick back panel. The back panel takes the hanging slots and links the two shelf angles to create a practical piece of furniture. The shelf angles are available in a choice of four widths and in the colours toning with the MosaiQ system – titanium grey and graphite black.

keseboehmer.com/linero-mosaiq





Shelf angle



Back panel



LINERO MosaiQ shelf set

Consists of:

Top and bottom shelf angle
with holes for wall fixings and
screw holes for attaching the back panel
(Not included: back panel and
wall fixings Ø 35 mm)

Dimensions (mm)
BxDxH

450 x 126 x 80
600 x 126 x 80
900 x 126 x 80
1200 x 126 x 80

Art. no.

00 8965
00 8966
00 8967
00 8968

Colour number:

Titanium grey 9843
Graphite black 9844





KESSEBÖHMER
CLEVER STORAGE



1593 69 0000